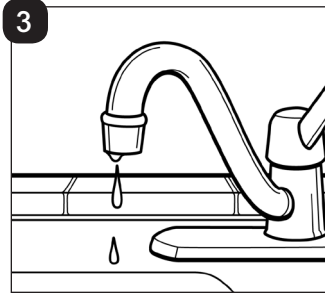
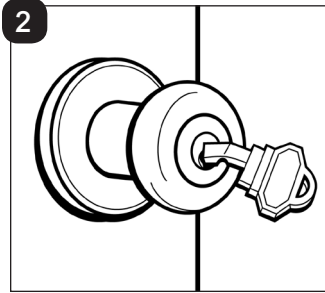
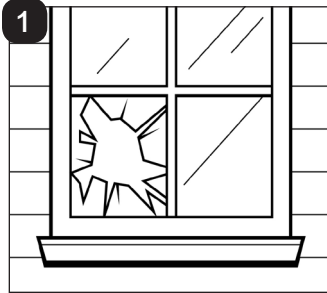


Worksheet 29 *Housing issues*

A Match the correct word with each picture.

leaking jammed broken



1. The window is _____.
2. The lock is _____.
3. The faucet is _____.

B Read the conversation. Complete the chart.

Sarah Hi, Sam. What's wrong?

Sam I have a problem. The faucet is leaking, and the toilet is broken.

Sarah You should call a plumber.

Sam The electricity isn't working, and the light bulb won't turn on, either.

Sarah You need to call an electrician. Any other problems?

Sam Yes. My window is also broken.

Sarah You should call your landlord about it.

Sam Thanks. I'll do that.

Problems	Solutions
<i>The faucet is leaking.</i>	<i>Call a plumber.</i>

C Talk with a partner. Ask and answer the questions.

1. Who do you contact for housing problems?
2. What do you do if your electricity isn't working?